



INTERNATIONAL
FIREARMS FACTORY

***PUMP ACTION
SHOTGUN***

READ THE INSTRUCTIONS AND WARNINGS IN
THIS MANUAL CAREFULLY BEFORE USING THIS
FIREARMS

THANK YOU FOR CHOOSING A “INTERNATIONAL FIREARMS FACTORY” PRODUCT

SAFETY RULES

Read very carefully this instruction manual before handling this shotgun.

Observe these rules of safe gun handling.

- 1. Always keep the muzzle pointed in a safe direction. Watch the muzzle at all times: never point a gun, accidentally or intentionally, at any person or anything you do not intend to shoot, identify the target before shooting; do not shoot at sounds.**
- 2. Always treat a gun as if it is loaded-it may be.**
- 3. Keep your finger off the trigger while opening the action and at all other times until you are ready to shoot.**
- 4. Keep the safety "on" or in the "safe" position at all times until you are ready to fire. Do not rely on your gun safety, the safety on any gun is a mechanical device and is not intended as a substitute for common sense gun handling.**
- 5. Learn how your gun functions and handles. If you do not thoroughly understand the proper use and care of your gun, seek the advice of someone who is knowledgeable.**
- 6. Do not alter or modify any part of the firearm.**
- 7. Store guns unloaded, separate from any ammunition, and out of the reach of children.**

SAFETY RULES

6. Be sure the barrel is clear of any obstructions before loading. Make it a habit to check the barrel every time before loading.

7. Wear protective shooting glasses and adequate ear protection when shooting.

8. Never climb or jump over anything, such as a tree, fence, or ditch, with a loaded gun. Open the barrel, remove the shells and hand the gun to someone else or place it on the ground on the other side of the obstacle before crowding it yourself. Do not lean a gun against a tree or other object; it could fall and possibly discharge.

12. Do not shoot a hard surface or at water. Bullets and shrapnel can ricochet or bounce off and travel in unpredictable directions with great velocity.

13. Never transport a loaded gun. Do not place a loaded gun into a vehicle. The gun should be unloaded and placed in a case when not in use.

14. Never drink alcoholic beverages before or during shooting.

ABOUT YOUR PUMP ACTION SHOTGUN

Your shotgun is manually operated. Once a shell has been fired, the locking lug in the bolt moves down, unlocking the gun. The forearm can then be moved to the rear and forward again, ejecting and loading a new shell.

To open the bolt without firing the gun, depress the soon bar lock, located just beside and forward of the trigger. This allows for opening the action without dry firing.

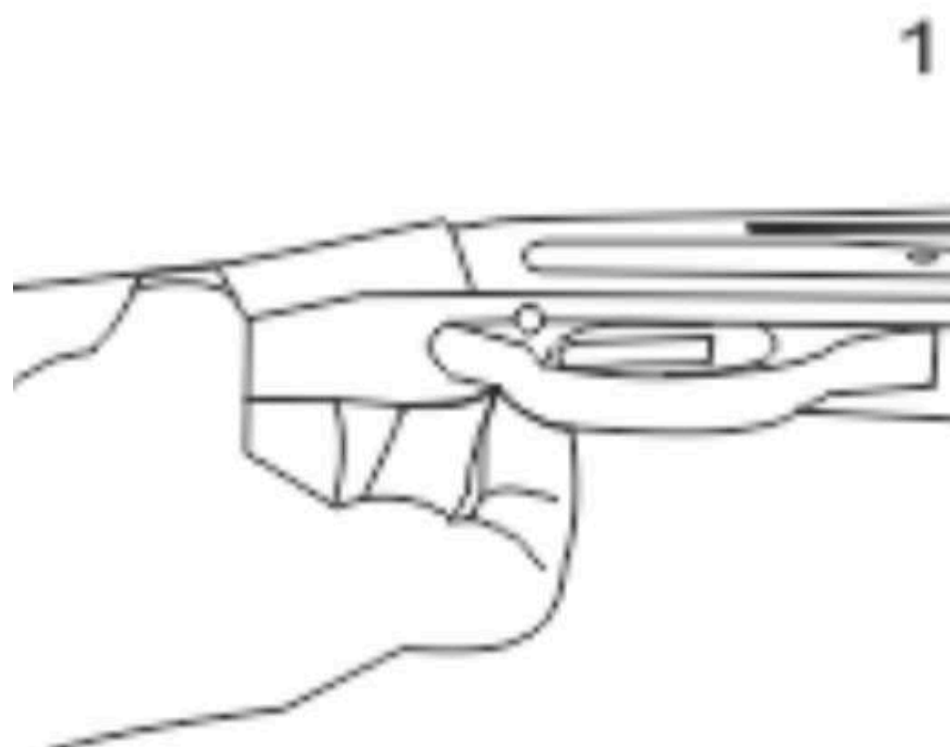
SAFETY SWITCH OR BUTTON

The safety is designed to stop the trigger mechanism.

DON'T RELY ON YOUR GUN'S SAFETY. TREAT EVERY GUN AS IF IT WERE LOADED AND READY TO FIRE. The safety on any gun is a mechanical device, and it is not intended as a substitute for common sense or side gun handling. Always keep the muzzle pointed in a safe direction.

The safety is located behind the trigger, and provides protection against dental or unintentional discharge under normal usage when properly used.

To engage the safety, push the button so that it protrudes from the right side of the gun and the RED BAND MARKING CAN NOT BE SEEN. The safety should always be in the "on" or "safe" position until you intend to fire the gun.

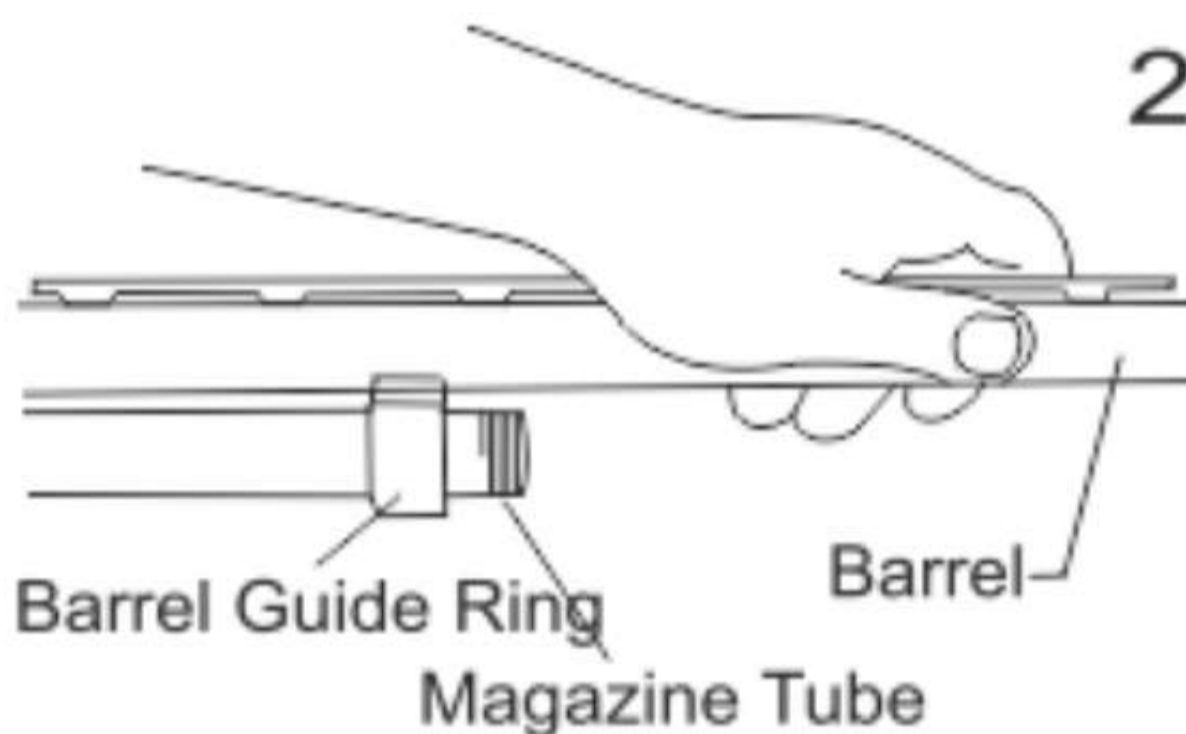


When you are ready to fire the gun, press the safety button to the "off" position so that the safety protrudes from the left side of the gun and the RED BAND MARKING

DANGER: The gun will fire when the trigger is pulled Intentionally or accidentally when the RED BAND MARKING IS SHOWING.

AMENDLY

1. Remove the magazine cap.
2. Press upward on the action berlock. Pull the forearm approximately half way reward.
3. Hold the barel ahead of the barel guide ring (Bee picture 2).



Slide the barel guide ring over the magazine tube. Clean the berral following the

Instructions on Page

Pre upward on the moon bar look.

Align the ejector on the Inside of the barel with the slot in the bolt.

Carefully set the barel into the receiver. DO NOT FORCE IT!

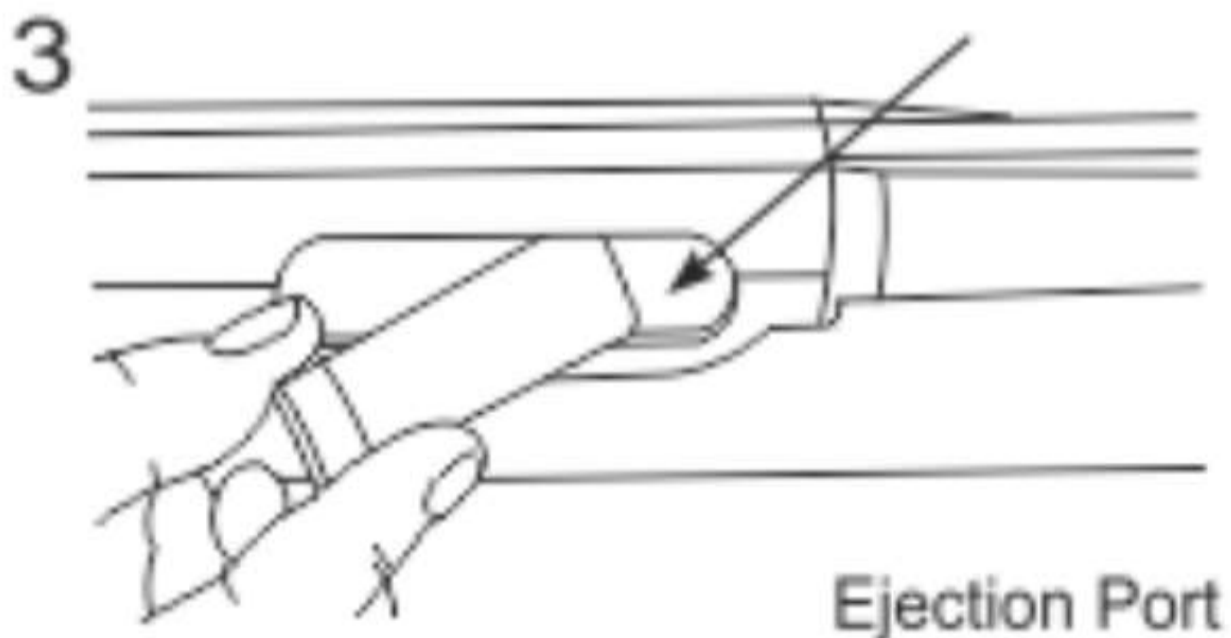
Replace the magazine cap. Tighten.

DISASSEMBLY

1. Make sure the gun is unloaded!
2. Point firearm in a direction
3. Push up on the action bar lock
4. Slide forearm forward half way.
6. Unscrow and remove the magazine cap.
6. Pull the barrel fully out of the receiver.
7. Push the carrier forward
6. Press and hold the action bar lock.
9. Slide the forearm forward and out of the magazine tube

LOADING YOUR SHOTGUN

1. Put safety in the "on" position.
2. Point the gun in a direction.
3. Push up on the action bar lock.
4. Pull the forearm completely to the rear and carefully hold it for the return spring to modulate
5. Pull one shell through the ejection port, making sure it is the correct gauge and length.




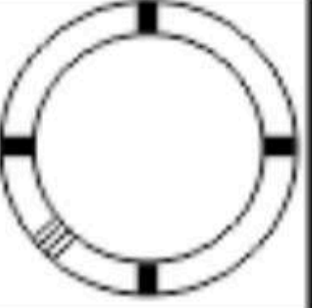
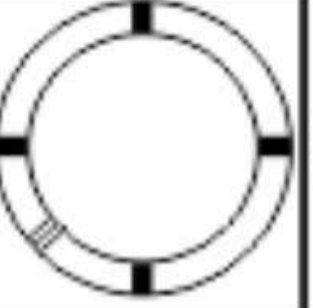
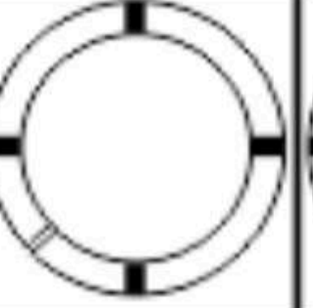
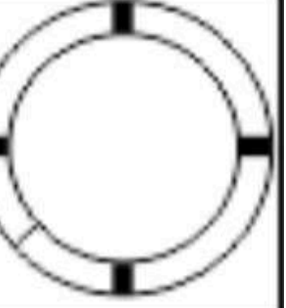
FULLY LOADING YOUR SHOTGUN

1. Put safety in the "on" position.
2. Point the gun in a safe direction.
3. Push up and lock the action.
4. Push the forend forward and carefully fold it for the return spring to engage.
5. Put one shell through the ejection port, making sure it is the correct gauge and length.
6. Push the forend forward and close the action.
7. Push a shell upward against the bottom of the carrier.
8. Push two (2) to four (4) shells, one at a time, fully forward into the magazine tube.

FOR THE MODELS WITH RETURN SPRING IN THE FOREND, YOU DO NOT NEED TO PUSH THE FOREARM TO CLOSE THE ACTION, THIS WILL BE DONE AUTOMATICALLY, BY THE HELP OF THE SPRING. THE SPRING WILL CLOSE THE ACTION AT A VERY FAST RATE, USE CAUTION AND WATCH OUT FOR YOUR FINGERS AND LOOSE CLOTHING.



**UMAGE OF CHOKI TURIS
DE YOUR PHOTOUN INCLUDES**

	SKEET	IC	M	IM	F
CHOKE TUBE					
BBLs	CL	★ ★ ★ ★	★ ★ ★	★ ★	★

The choke controls how open or tight the pattern of the shot will be. The chart below lists the chokes available (from open to tight), and the corresponding marks indicate the specific choke. Never fire your gun or run cleaning tools through a barrel that uses a choke tube without having a choke installed. The threads of the choke tube and the internal threads of the barrel should be cleaned after each use and before installation of the tube.

To install a tube, insert the tube into the top of the barrel and tighten with your fingers. Once the tube is finger-tightened, tighten the rest of the way with the appropriate choke tube wrench until the tube is snug. **DO NOT** overtighten or forcefully tighten with the wrench.

IMPORTANT - USAGE OF STEEL SHOT

The choke (before constriction) in all modern shotguns have been established based on the pattern performance of shot shells loaded with lead shot. When using steel shotshells, you will notice a different performance in pattern density versus the established lead shot pattern, because the steel shot is harder and lighter than lead shot.

You should be aware of the following differences and cautions: Never shoot steel shot loads in a full choke barrel or an improved modified choke barrel. Doing so, may anneal the barrel in wall or rupture. In general, steel shot fired with modified chokes will produce the equivalent of a lead full choke pattern. This will be true of all steel shot sized up to and including no. 2. The established improved cylinder chokes will produce the equivalent of a (lead) modified pattern. All steel shot sized larger than no. 2, and including specialized such as F. T, etc., should be used only with Improved cylinder chokes. These steel shot sizes, when used in Improved cylinder choke, will produce equivalent to (lead) full choke patterns. The established cylinder choke or bore will produce the equivalent of a modified (lead) pattern. Additional information concerning the use of steel shot is available from the ammunition companies.

NICE AND CLEANING

- 1. Make sure the broad, polished finely fitted mating surface of the breech block and receiver is especially clean and lightly oiled with high quality gun oil. Do not use silicone or Mucil (Do not use WD-10).**
- 2. Run an all patch through the bore with a cleaning rod starting from the breech end. To prevent leading, use a cleaning solvent and brass brush to clean the bore periodically. Follow this lining with one or two clean oil patches. Important your gun is equipped with choke tubes, do not use brass brush to clean the barrels without having a choke tube installed. Barrels that utilize choke tubes must also have the choke tubes removed to clean and all the threads inside the barrel and the choke tubes themselves. This will protect the threads and prevent dirt build up that can cause tubes to become difficult to remove.**

Never fire your gun without choke tubes snugly tightened in barrel. Do not overlighten choke tubes. Wipe all exposed metal surfaces with an oiled cloth before storing. Do not squirt or pour oil into the inside mechanism because it may hamper proper functioning. After extended periods of heavy use, your gun should be taken to a qualified gunsmith to have the action disassembled for professional cleaning and lubrication.

STORAGE

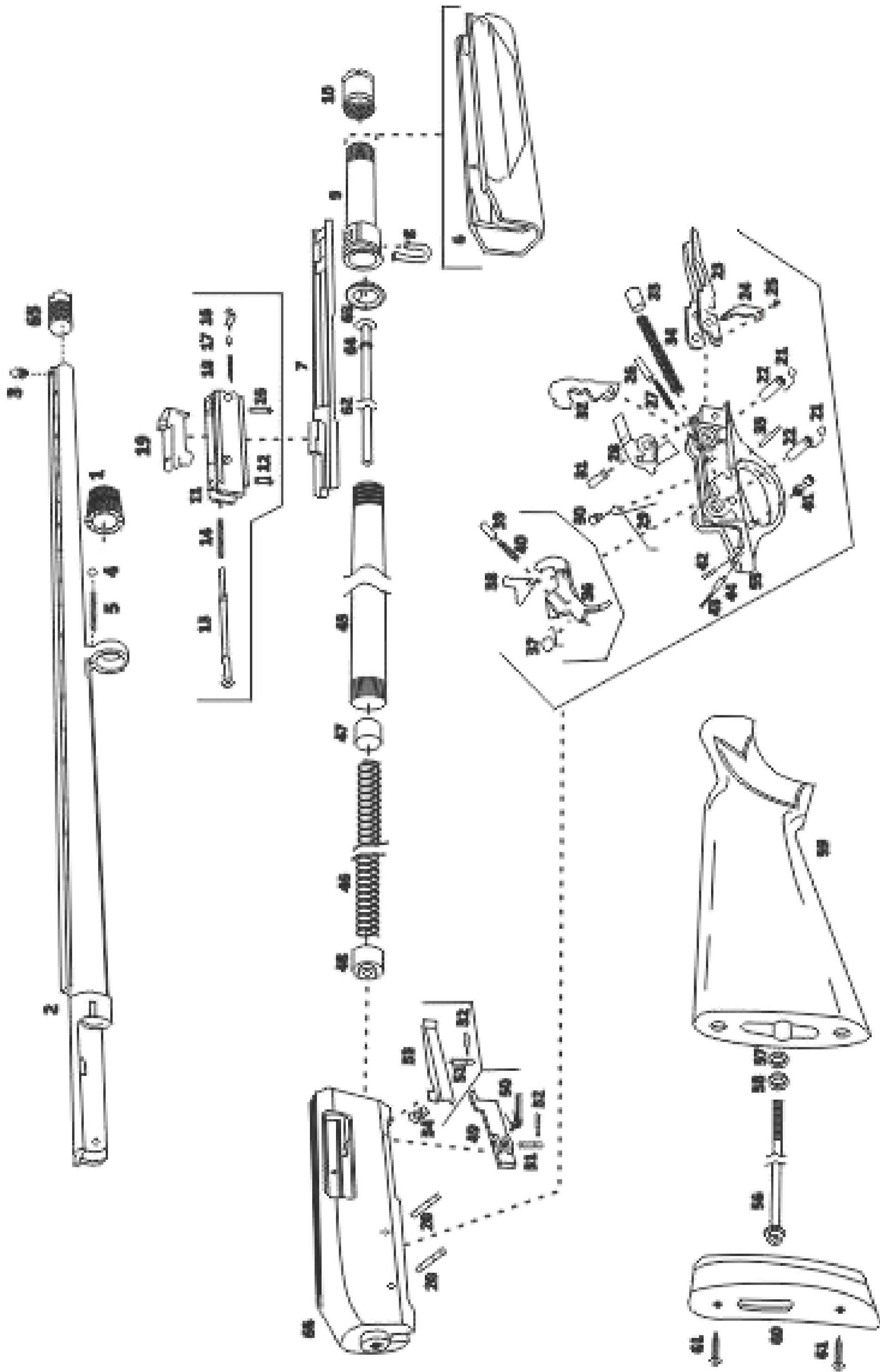
Clean thoroughly and all your gun before storage. Store the gun in a case to prevent scratches and denting. Store your firearm in a dry place to prevent corrosion. Store the gun away from children and in a place where it cannot be obtained by those unauthorized to use it. Always store gun unloaded and separately from any ammunition.

THANK YOU

Thank you for purchasing a IFF shotgun. We are sure this gun will bring you years of hunting and/or shooting pleasure. Your satisfaction is the key to our success. Please let us know if we can be of service and relay any observations about your gun's performance or appearance.

EXPLODED VIEW

EXPLODED DIAGRAM



PART LIST

1)	Magazine cap	34)	Spring, hammer
2)	Barrel	35)	Pin, trigger pivot
3)	Front bead	36)	Trigger
4)	Detent, magazine cap	37)	Spring, trigger
5)	Spring, magazine cap detent	38)	Sear
6)	Forearm	39)	Cap, sear spring
7)	Slide arm	40)	Spring, sear
8)	Clip, slide arm retainer	41)	Safety
9)	Forearm tube	42)	Detent, safety
10)	Nut, forearm tube	43)	Spring, safety detent
11)	Bolt body	44)	Pin, safety spring retaining
12)	Pin, firing pin retaining	45)	Magazine tube
13)	Firing pin	46)	Spring, magazine
14)	Spring, firing pin	47)	Magazine spring retainer
15)	Pin, extractor retaining	48)	Magazine spring follower
16)	Extractor	49)	Feed latch
17)	Plunger, extractor	50)	Spring, feed latch
18)	Spring, extractor	51)	Pin, latch pivot (2)
19)	Locking block	52)	Retainer, latch pivot (2)
20)	Pin, trigger frame (2)	53)	Shell stop
21)	"D" ring, trigger frame pin 2	54)	Spring, shell stop
22)	Tube, trigger frame pin (2)	55)	Trigger guard housing
23)	Lifter	56)	Bolt, stock
24)	Lifter dog	57)	Washer, flat stock bolt
25)	Pin, lifter dog	58)	Washer, lock stock bolt
26)	Cap, lifter dog spring	59)	Stock
27)	Spring, lifter dog	60)	Recoil pad
28)	Slide lock lever	61)	Screw, recoil pad (2)
29)	Spring, slide lock lever	62)	Magazine blocker
30)	Stud, slide lock lever spring	63)	Retainer, magazine blocker
31)	Pin, hammer pivot	64)	"E" clip, magazine blocker
32)	Hammer	65)	Choke tube
33)	Cap, hammer spring		



INTERNATIONAL
FIREARMS FACTORY

International Firearms Factory

**Üzümlü Mh. 44829.Sk. No:5/A Beyşehir - Konya /
TURKEY**

WEB : <https://internationalfirearmsfactory.com/>

E-MAIL : export@internationalfirearmsfactory.com