



INTERNATIONAL
FIREARMS FACTORY

MAGAZINE FEED USER MANUAL

READ THE INSTRUCTIONS AND WARNINGS IN
THIS MANUAL CAREFULLY BEFORE USING THIS
FIREARMS

THANK YOU FOR CHOOSING A “INTERNATIONAL FIREARMS FACTORY” PRODUCT

WARNINGS

Read very carefully this instruction manual before handing this shotgun.

The manufacturer is not responsible for damage to objects caused by misuse of the firearm or for injuries to persons or animals, or in case of death, caused voluntarily or involuntarily by the firearm user.

The manufacturer is not responsible for injuries caused by poor maintenance, misuse of the firearm, unauthorized or improper modifications.

The manufacturer declines responsibility for the indirect consequences of any injuries and/or death of persons or animals, damage to objects caused by use of the firearm or by primer explosion, by bullet's ricochet, or unsafe loading practices and/or procedure.

Read the entire manual and learn the proper use of the firearm without live ammunition.

It is important that you understand the proper use of this product. The life of the people close to you may depend on your safe behavior.

If the manual is not clear, please contact the dealer where you bought the firearm or call the distributor or the manufacturer by using the contact information provided within this manual.

The manufacturer declines any responsibility for misuse of the firearm. In case of alteration of the firearm, The manufacturer declines any civil and penal responsibility and will not refund any damage.

Quality Inspection: Every firearm is thoroughly inspected by the manufacturer, for function and cosmetic blemish, prior to shipment.

SAFETY RULES

- Read the instructions carefully before use. Reading the manual and careful examination of the firearm are fundamental to avoid any kind of problem.
- Be aware that you are handling a firearm; therefore your knowledge and behavior may affect your life and those of the people close to you.
- Firearms and ammunitions must be kept in separate places.
- Always keep firearm and ammunitions out of reach of children.
- Store the firearm in a clean, dry and airy place after use to avoid rust in mechanical parts that may cause serious problems in functioning after a period of inactivity.
- The firearm must always be stored unloaded, always check that the chamber is empty.
- Keep away from open flames or heating sources. Never leave a loaded firearm unattended. Never leave the firearm loaded, it could fall and cause injury and death. Always point the firearm in a safe direction, and handle it as though it were loaded. This is especially important when loading and unloading the firearm and when handing it to someone else. Never take someone's word that it is unloaded. Always make sure the firearm is unloaded before laying it down or handing it to someone else.
- After use, clean and lubricate the inside of the barrel with appropriate oil. Grease or oil build up can cause excessive pressure and result in serious personal injuries. Before using the firearm again, inspect the barrel and chamber to make certain that there are no obstructions in the bore. Remove any oil residue with rod and dry patch before shooting.

SAFETY RULES

- **Never rest your finger on the trigger until the very moment you wish to shoot. Always keep the safety on until you are ready to safely shoot at an intended target. Note: Safety devices on firearms are extras and are not a substitute for your proper and safe handling practices.**
- **Always keep the firearm unloaded when transporting it from home to the shooting areas. Carefully check that cartridge chamber is empty.**
- **When you walk around with the firearm in a shooting area, always keep the muzzle pointed in a safe direction.**
- **Never run with a loaded firearm, do not cross any obstacle (fences or water courses, etc.) or walk where there is any possibility of slipping or falling without having your firearm unloaded and in safety position.**
- **When selecting a place to shoot, always be absolutely sure of your target and the area behind it before you touch the trigger, making sure there is an adequate backstop which will stop and contain bullets. A bullet can travel through or past your target with a range up to 1.5 miles. If you have any doubt, do not shoot.**
- **Never shoot against a solid surface or in a pool of water, the projectiles could ricochet and shoot toward any direction. Do not shoot up into the sky.**
- **Keep all bystanders behind you, standing beside a shooter is not a safe position. Make sure all other shooters and bystanders are well away from the ejection port.**
- **Do not smoke while handling, loading or shooting any ammunition, especially black powder. Keep black powder in a closed container at all times, re-closing the container after each and every use. habits is the best way to prevent accidents.**

SAFETY RULES

- **Never drink alcoholic beverages or take any drugs before orduring shooting, as this not only constitutes criminal disregard for your safety and that of others, but will seriously impair your judgment and vision. Never use a firearm while you are taking medication unless you have checked with your doctor to ensure you are fit to handle the firearm safely.**
- **Always wear and encourage others near you to wear proper ear protection when shooting, especially on a range since the noise from your firearm and other firearms close to you, could result in permanent hearing loss.**
- **Always wear protective shooting glasses to protect your eyes from injury by gun powder, gas, lubricant, dirt or metallic particles, carbon residue, sparks or other debris.**
- **Wash hands thoroughly after shooting and handling firearms to remove any unwanted residues.**
- **Never leave the loaded firearm or the loaded magazine in the sun.**
- **By replica firearms there is no modern safety. In this case you must pay even more attention to safety rules.**

REMEMBER : No mechanical safety device is infallible. The user is responsible for injuries or damages caused to him or to other persons. Complete knowledge of your firearm can make the difference.

IDENTIFYING MARKINGS

Every firearm produced in our factory has a serial number that is marked on the receiver/frame . In addition to the serial number you will also find the manufacturers information with the model name and caliber marked either on the frame or the barrel as required by law.

WARNING : These markings must not be removed from the firearm for any reason.

DESCRIPTION & SPECS

Your shotgun is gas operated. The gas created from firing a live shot shell operates the action. Once the first shell has been fired, the next shell in the magazine will automatically cycle into the chamber, and this cycle will continue (each time the trigger is pulled) until all shells loaded in the magazine have been fired. The bolt will remain locked in the open position after the last shell is fired.

SAFETY SWITCH/BUTTON

The safety is designed to stop the trigger mechanism. Do not rely on your firearms' safety, treat every firearm as if it were loaded and ready to fire. The safety on any firearm is a mechanical device, and it is not intended as a substitute for common sense or safe firearms handling. Always keep the muzzle pointed in a safe direction.

2. The manual safety mechanism is located above the trigger on the left side (and right if ambidextrous equipped) of the lower receiver. The safety should always be in the "on" or "safe" position until you intend to fire the gun. As shown in the figure on the right.



3. When you are ready to fire the gun, switch the safety button to the "off" position so that it can be fired when intended to.

LOADING

Be sure the safety is in the “on” or “safe” position and the barrel is pointed in a safe direction.

1. Remember, a safe direction means that the gun is pointed so that even if it were to go off, it would not cause injury, damage, or death

2. Always perform a safety check to make sure that the chamber is empty. When the magazine is empty, the bolt catch lever holds the bolt open at the rear.

3. Press the magazine release to remove the empty magazine and insert a loaded magazine.

4. Push down the bolt catch lever with the thumb of the shooting hand and this will allow the bolt to move forward and chamber a round.

**THE SHOTGUN IS NOW LOADED AND READY TO FIRE!
IMPORTANT WARNING: ALWAYS UNLOAD YOUR FIREARM
IMMEDIATELY AFTER SHOOTING.**

UNLOADING

Be sure the safety is in the “on” or “safe” position and the barrel is pointed in a safe direction.

1. Pull back the charging handle one or more times to insure the chamber is empty. Watch for a live round or empty case to be ejected. Pull the charging handle fully rearward and lock the bolt with the bolt catch lever.

2. Make sure the last round in the chamber has been extracted and ejected. Visually and physically check the chamber and the magazine well to make sure the shotgun has been fully unloaded.

DISASSEMBLY

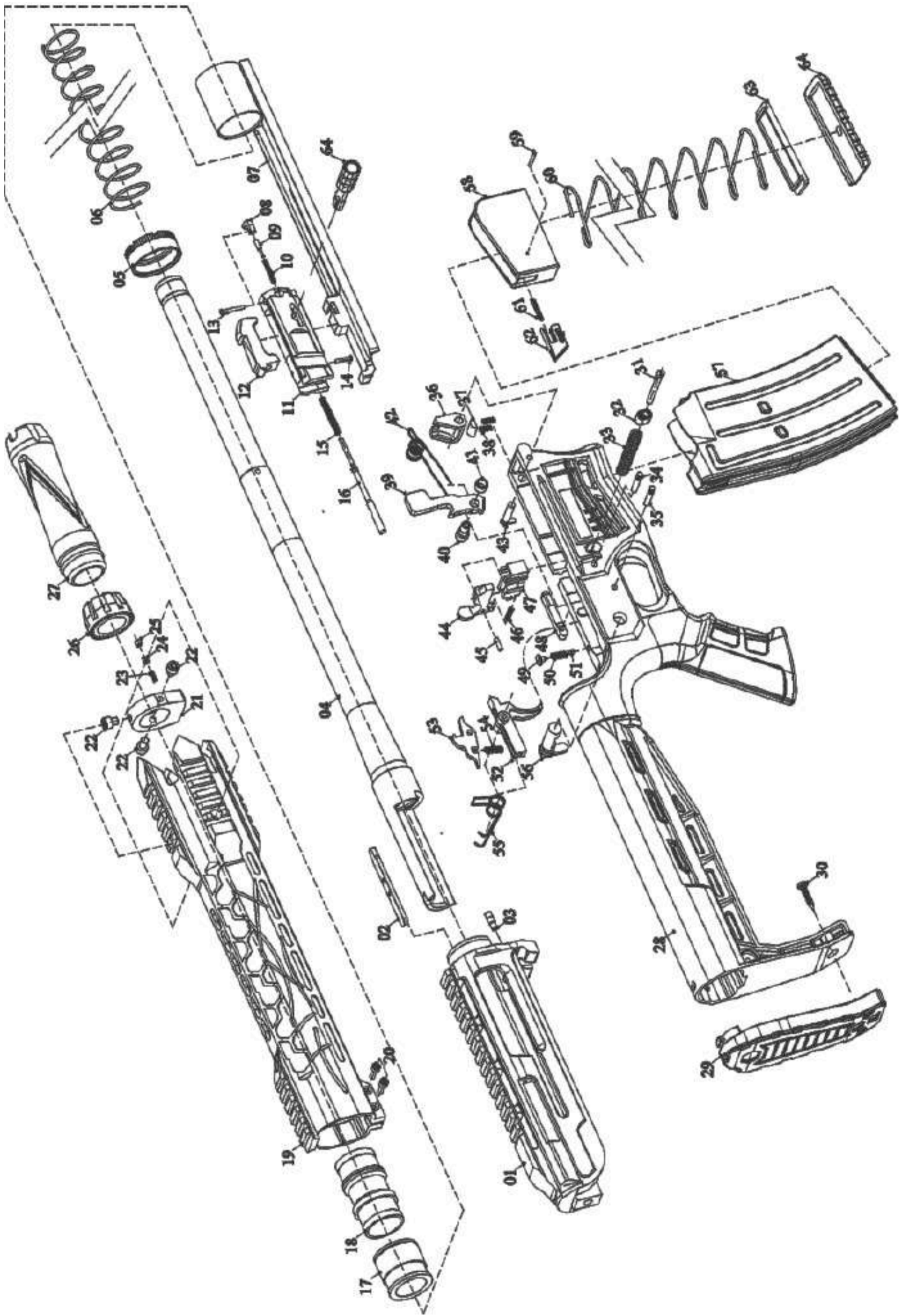
Be sure the safety is in the “on” or “safe” position and the barrel is pointed in a safe direction.

WARNING: Make sure the gun is unloaded.

1. Remove the magazine by pushing the mag release button.
- 2- Unscrew the barrel shroud or the barrel nut by turning counter clockwise.
- 3- Take out the carrying handle (if fitted) by unscrewing the nuts.
- 4- Take out the handguard sliding in the arrow direction.
- 5- Unscrew the counter-nut and remove the block and the piston.
- 6- Remove the charging handle by aligning the holes. (Drag the action bar with the left hand to make the mentioned aligning)
- 7- Unscrew to remove the pad.
- 8- Unscrew the nut inside the stock to take down the upper receiver.
- 9- Pull the barrel to take down the upper receiver.



EXPLODED VIEW



PART LIST

1	UPPER FRAME	26	HANDGUARD RETAINER NUT	50	SAFETY SPRING
2	UPPER FRAME PIN	27	MUZZLE BREAK	51	SELECTOR DETENT
3	HANDGUARD RETAINER PIN	28	STOCK	52	TRIGGER
4	BARREL	29	RECOIL PAD	53	DISCONNECTOR
5	BARREL NUT	29	PIVOT PIN	54	DISCONNECTOR SPRING
6	OPERATION SPRING	30	RECOIL PAD SCREW	49	SAFETY SPRING PIN
7	ACTION BAR (CARRIER)	31	MAGAZINE CATCH SCREW	50	SAFETY SPRING
8	EXTRACTOR	32	MAGAZINE CATCH BUTTON	51	SELECTOR DETENT
9	EXTRACTOR SPRING PIN	33	MAGAZINE CATCH SPRING	52	TRIGGER
10	EXTRACTOR SPRING	34	HAMMER PIN	53	DISCONNECTOR
11	BOLT	35	TRIGGER PIN	54	DISCONNECTOR SPRING
12	LOCK	36	RAMP	55	TRIGGER SPRING
13	EXTRACTOR PIN	37	RAMP LOCK	56	SAFETY
14	FIRING PIN RETAINER	38	RAMP SPRING	57	MAGAZINE
15	FIRING PIN SPRING	39	HAMMER	58	MAGAZINE UPPER PLUG
16	FIRING PIN	40	HAMMER PIN	59	MAGAZINE UPPER PLUG PIN
17	GAS PISTON	41	HAMMER SCREW	60	MAGAZINE SPRING
18	GAS BLOCK	42	HAMMER SPRING	61	MAGAZINE SIDE EXTRACTOR
19	HANDGUARD	43	RAMP KEY		SPRING
20	HANDGUARD SCREW	44	BOLT CATCH	62	MAGAZINE SIDE EXTRACTOR
21	HANDGUARD RETAINER	45	BOLT CATCH PIN	63	SPRING RETAINER APARATUS
22	HANDGUARD RETAINER SCREW	46	BOLT CATCH SPRING	64	MAGAZINE BASE PLATE
23	HANDGUARD RETAINER SPRING	47	BOLT CATCH PIN	64	PULL HANDLE
24	HANDGUARD RETAINER PIN	48	MAGAZINE LOCK		
25	HANDGUARD RETAINER SCREW	49	SAFETY SPRING PIN		

REASSEMBLY

1. Do the reverse procedure of disassembling the firearm.

CLEANING & MAINTENANCE

WARNING: Make sure the firearm is unloaded.

1. Make sure the broad, polished finely fitting mating surface of the breech block and receiver is especially clean and lightly oiled with high quality gun oil. Do not use silicone, lanolin or WD-40.

2. Run an oil patch through the bore with a cleaning rod starting from the breech end. To prevent leading, use a cleaning solvent and brass brush to clean the bore periodically. Follow this cleaning with one or two clean oil patches.

IMPORTANT: If your gun is equipped with choke tubes, do not use a brass brush to clean the barrels without having a choke tube installed.

Barrels that utilize choke tubes must also have the choke tubes removed to clean and oil the threads inside the barrel and the choke tubes themselves. This will protect the threads and prevent dirt build up that can cause tubes to become difficult to remove.

Never fire your gun without choke tubes completely tightened in barrels. Do not over tighten choke tubes. Wipe all exposed metal surfaces with an oiled cloth before storing. Do not squirt or pour oil into the mechanism because it may hamper proper functioning and will soak into the wood.

After extended periods of heavy use, your gun should be taken to a qualified gunsmith to have the action disassembled for professional cleaning and lubrication.

3. Care for your wood stock and forearm the same way you would a piece of furniture with the same finish.

STORAGE

- 1. Clean thoroughly and oil your firearm before storage.**
- 2. Store the firearm in a case to prevent scratches and dents.**
- 3. Store your firearm in a dry place to prevent corrosion.**
- 4. Store the firearm away from children and in a place where it cannot be obtained by those unauthorized to use it.**
- 5. Always store firearm unloaded and separately from and ammunition.**



INTERNATIONAL
FIREARMS FACTORY

International Firearms Factory

**Üzümlü Mh. 44829.Sk. No:5/A Beyşehir - Konya /
TURKEY**

WEB : <https://internationalfirearmsfactory.com/>

E-MAIL : export@internationalfirearmsfactory.com