



IFF SEMI AUTO SHOTGUN USER MANUAL

**READ THE INSTRUCTIONS AND WARNINGS IN
THIS MANUAL CAREFULLY BEFORE USING THIS
FIREARMS**

THANK YOU FOR CHOOSING A “INTERNATIONAL FIREARMS FACTORY” PRODUCT

WARNINGS

Read very carefully this instruction manual before handing this shotgun.

The manufacturer is not responsible for damage to objects caused by misuse of the firearm or for injuries to persons or animals, or in case of death, caused voluntarily or involuntarily by the firearm user.

The manufacturer is not responsible for injuries caused by poor maintenance, misuse of the firearm, unauthorized or improper modifications.

The manufacturer declines responsibility for the indirect consequences of any injuries and/or death of persons or animals, damage to objects caused by use of the firearm or by primer explosion, by bullet's ricochet, or unsafe loading practices and/or procedure.

Read the entire manual and learn the proper use of the firearm without live ammunition.

It is important that you understand the proper use of this product. The life of the people close to you may depend on your safe behavior.

If the manual is not clear, please contact the dealer where you bought the firearm or call the distributor or the manufacturer by using the contact information provided within this manual.

The manufacturer declines any responsibility for misuse of the firearm. In case of alteration of the firearm, The manufacturer declines any civil and penal responsibility and will not refund any damage.

Quality Inspection: Every firearm is thoroughly inspected by the manufacturer, for function and cosmetic blemish, prior to shipment.

SAFETY RULES

- Read the instructions carefully before use. Reading the manual and careful examination of the firearm are fundamental to avoid any kind of problem.
- Be aware that you are handling a firearm; therefore your knowledge and behavior may affect your life and those of the people close to you.
- Firearms and ammunitions must be kept in separate places.
- Always keep firearm and ammunitions out of reach of children.
- Store the firearm in a clean, dry and airy place after use to avoid rust in mechanical parts that may cause serious problems in functioning after a period of inactivity.
- The firearm must always be stored unloaded, always check that the chamber is empty.
- Keep away from open flames or heating sources. Never leave a loaded firearm unattended. Never leave the firearm loaded, it could fall and cause injury and death. Always point the firearm in a safe direction, and handle it as though it were loaded. This is especially important when loading and unloading the firearm and when handing it to someone else. Never take someone's word that it is unloaded. Always make sure the firearm is unloaded before laying it down or handing it to someone else.
- After use, clean and lubricate the inside of the barrel with appropriate oil. Grease or oil build up can cause excessive pressure and result in serious personal injuries. Before using the firearm again, inspect the barrel and chamber to make certain that there are no obstructions in the bore. Remove any oil residue with rod and dry patch before shooting.

SAFETY RULES

- **Never rest your finger on the trigger until the very moment you wish to shoot. Always keep the safety on until you are ready to safely shoot at an intended target. Note: Safety devices on firearms are extras and are not a substitute for your proper and safe handling practices.**
- **Always keep the firearm unloaded when transporting it from home to the shooting areas. Carefully check that cartridge chamber is empty.**
- **When you walk around with the firearm in a shooting area, always keep the muzzle pointed in a safe direction.**
- **Never run with a loaded firearm, do not cross any obstacle (fences or water courses, etc.) or walk where there is any possibility of slipping or falling without having your firearm unloaded and in safety position.**
- **When selecting a place to shoot, always be absolutely sure of your target and the area behind it before you touch the trigger, making sure there is an adequate backstop which will stop and contain bullets. A bullet can travel through or past your target with a range up to 1.5 miles. If you have any doubt, do not shoot.**
- **Never shoot against a solid surface or in a pool of water, the projectiles could ricochet and shoot toward any direction. Do not shoot up into the sky.**
- **Keep all bystanders behind you, standing beside a shooter is not a safe position. Make sure all other shooters and bystanders are well away from the ejection port.**
- **Do not smoke while handling, loading or shooting any ammunition, especially black powder. Keep black powder in a closed container at all times, re-closing the container after each and every use. habits is the best way to prevent accidents.**

SAFETY RULES

- **Never drink alcoholic beverages or take any drugs before orduring shooting, as this not only constitutes criminal disregard for your safety and that of others, but will seriously impair your judgment and vision. Never use a firearm while you are taking medication unless you have checked with your doctor to ensure you are fit to handle the firearm safely.**
- **Always wear and encourage others near you to wear proper ear protection when shooting, especially on a range since the noise from your firearm and other firearms close to you, could result in permanent hearing loss.**
- **Always wear protective shooting glasses to protect your eyes from injury by gun powder, gas, lubricant, dirt or metallic particles, carbon residue, sparks or other debris.**
- **Wash hands thoroughly after shooting and handling firearms to remove any unwanted residues.**
- **Never leave the loaded firearm or the loaded magazine in the sun.**
- **By replica firearms there is no modern safety. In this case you must pay even more attention to safety rules.**

REMEMBER : No mechanical safety device is infallible. The user is responsible for injuries or damages caused to him or to other persons. Complete knowledge of your firearm can make the difference.

IDENTIFYING MARKINGS

Every firearm produced in our factory has a serial number that is marked on the receiver/frame . In addition to the serial number you will also find the manufacturers information with the model name and caliber marked either on the frame or the barrel as required by law.

WARNING : These markings must not be removed from the firearm for any reason.

DESCRIPTION & SPECS

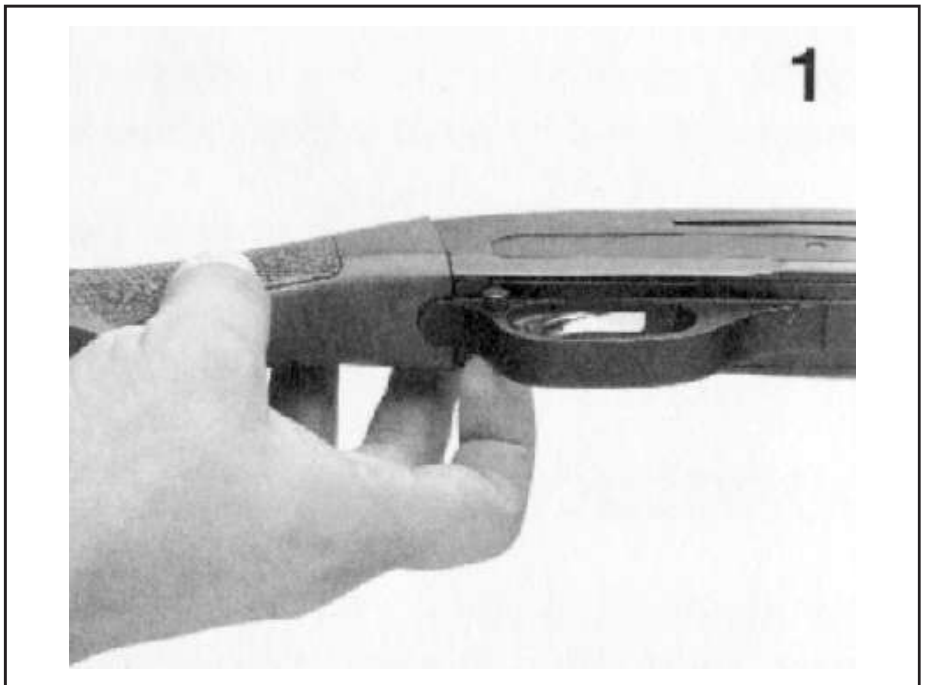
Your shotgun is gas operated. The gas created from firing a live shot shell operates the action. Once the first shell has been fired, the next shell in the magazine will automatically cycle into the chamber, and this cycle will continue (each time the trigger is pulled) until all shells loaded in the magazine have been fired. The bolt will remain locked in the open position after the last shell is fired.

SAFETY SWITCH/BUTTON

The safety is designed to stop the trigger mechanism. Do not rely on your firearms' safety, treat every firearm as if it were loaded and ready to fire. The safety on any firearm is a mechanical device, and it is not intended as a substitute for common sense or safe firearms handling. Always keep the muzzle pointed in a safe direction.

1 - The safety is located behind the trigger, and provides protection against accidental or unintentional discharge under normal usage when properly used.

2 - To engage the safety, push the button so that it protrudes from the right side of the gun and RED BAND MARKING CAN NOT BE SEEN. The safety should always be in the "on" or "safe" position until you intend to fire the gun. As shown in the figure on the right.



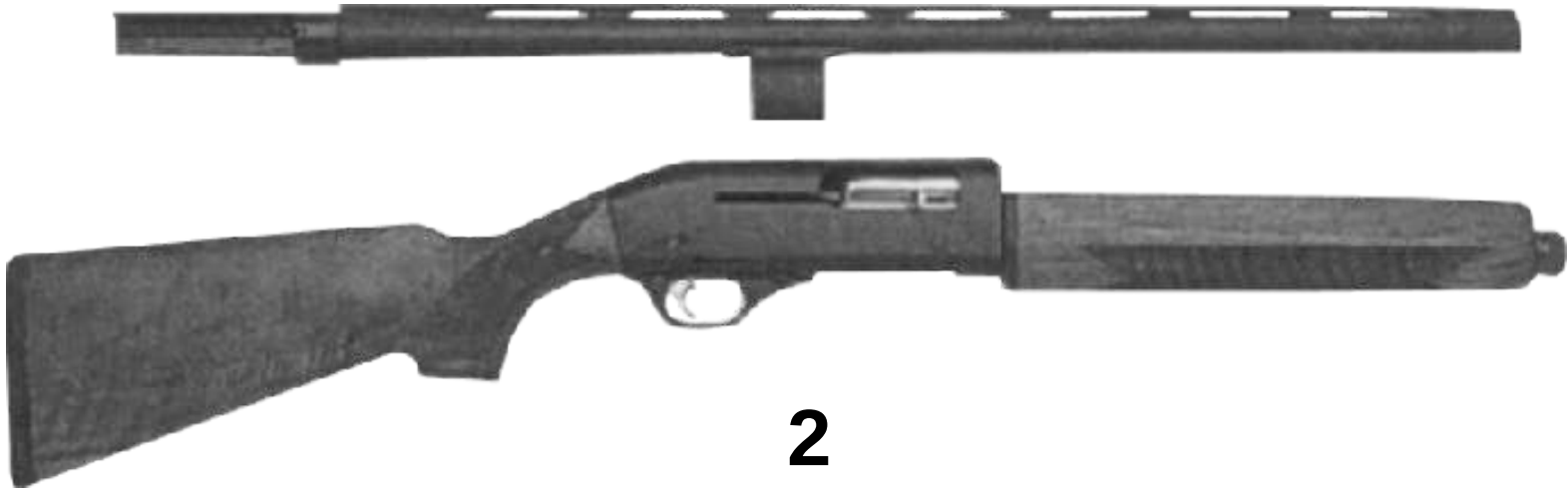
3 - When you are ready to fire the gun, press the safety button to the "off" position so that the safety protrudes from the left side of the gun and the

RED BAND MARKING IS SHOWING.

WARNING: The gun will fire when the trigger is pulled intentionally or accidentally when the *RED BAND MARKING IS SHOWING.*

ASSEMBLY

In the packing, the shotgun is divided into two parts: receiver and barrel group (photo 2).



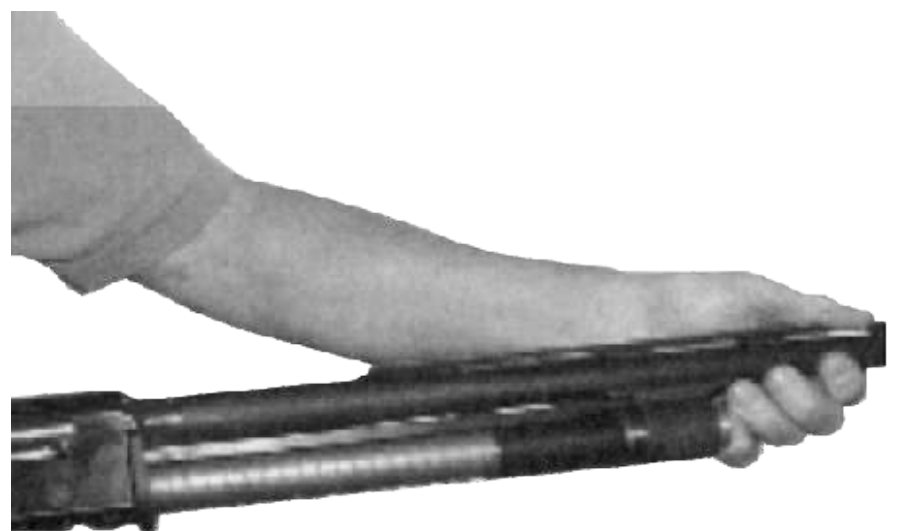
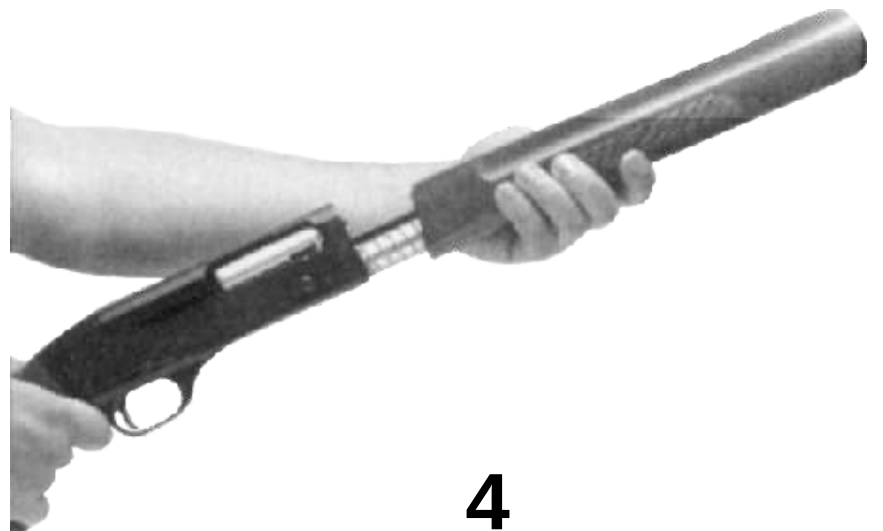
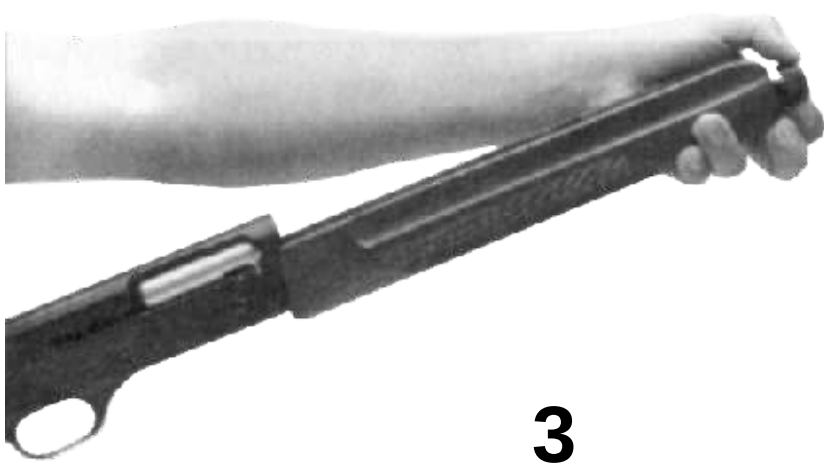
To assemble the gun, follow the steps below:

Unscrew the cap (photo 3) and remove the forend (photo 4).

Pull the bolt hanging latch placed on the rear side of the carrier (photo 5).

Assemble the barrel while centering the magazine and the receiver (photo 6).

Reassemble the forend (photo 7) and screw the cap onto the threaded magazine tube (photo 8).



ASSEMBLY



LOADING YOUR SHOTGUN

You can load your shotgun in the following ways :

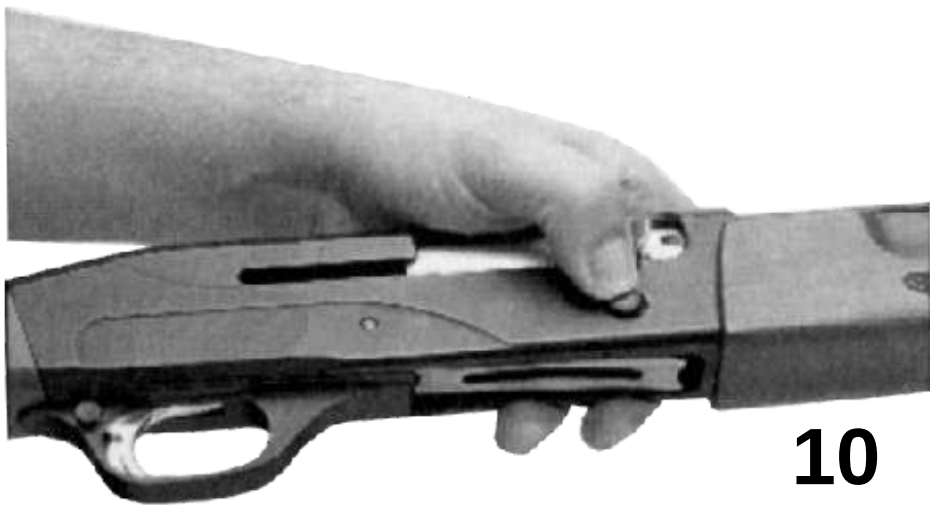
1. Be certain the safety is in the “on” or “ safe “ position (see section regarding operation of the safety on pages 3 and 4)

Draw or pull the bolt rearward until it locks in the open position (photo 12) Place a shell into the breach (photo 9) . Release the bolt by pressing the button located toward the front of the receiver (photo 10) . This chambers a round , and the gun will fire if the trigger is pulled with the safety in the “off” or “fire” position. You can then load additional shells into the magazine by inserting them into the magazine (photo 11) .

2. Be certain the safety is in the “on” or “safe” position (see section regarding operation of the safety on pages 3 and 4)

Draw or pull the bolt rearward until it locks in the open position (photo 12) . Load shells into the magazine by inserting them through the loading port on the bottom of the receiver and pushing them into the magazine (photo 11) . Push back the magazine shell latch on the rear side of the carrier (photo 13) . This allows the shell to exit the magazine and move . Release the bolt by pressing the button located toward the front of the receiver (photo 10) . This chambers a round , and the gun will fire if the trigger is pulled with the safety in the “off” or “fire position”

LOADING YOUR SHOTGUN



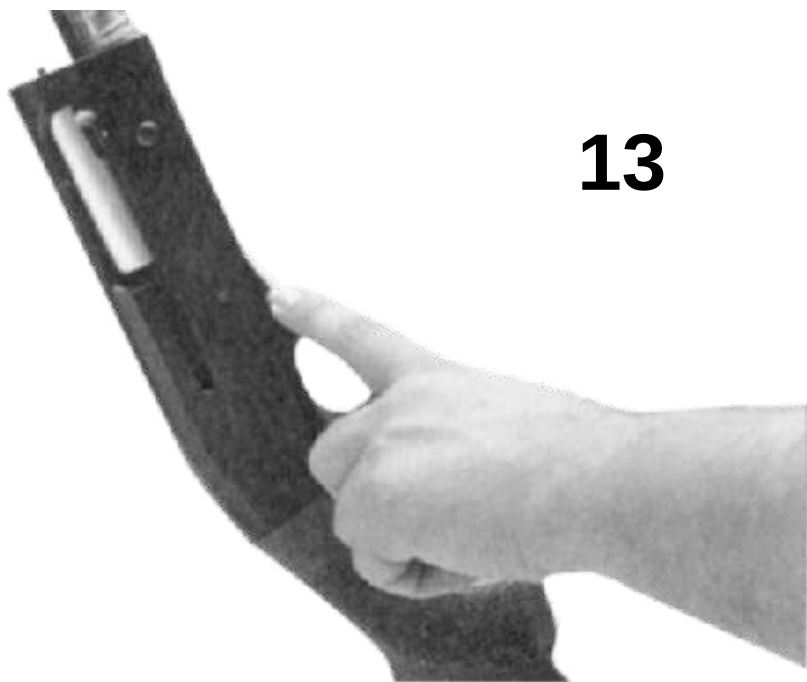
11

UNLOADING YOUR SHOTGUN

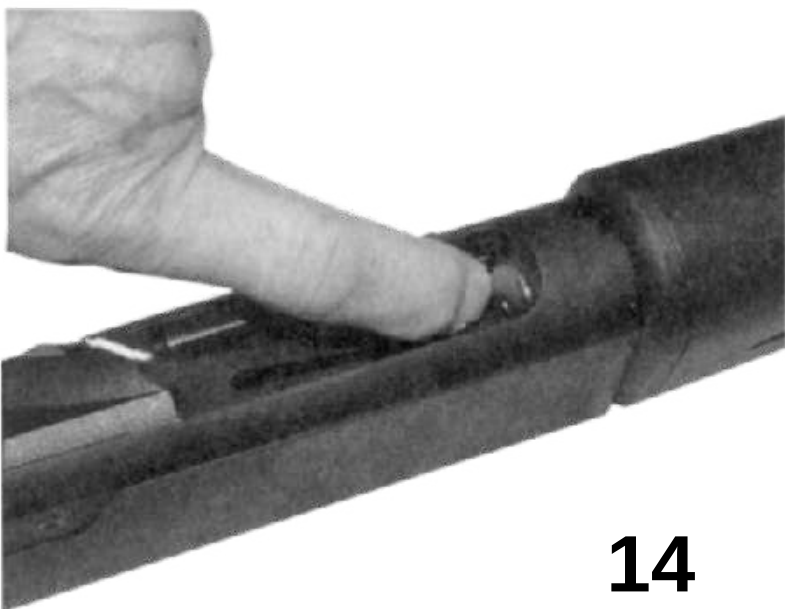
Be certain the safety is in the "on" or "safe" position (see the section regarding operation of the safety on pages 3 and 4). Repidly draw or pull the bolt reaward to eject any shell in the chamber (photo 12). Lock the bolt open by pressing the but-ton located toward the front of the receiver (photo 13). Lift the carrier and push on the magazine shell latch (photo 14). The shells in the magazine will be ejected.



13

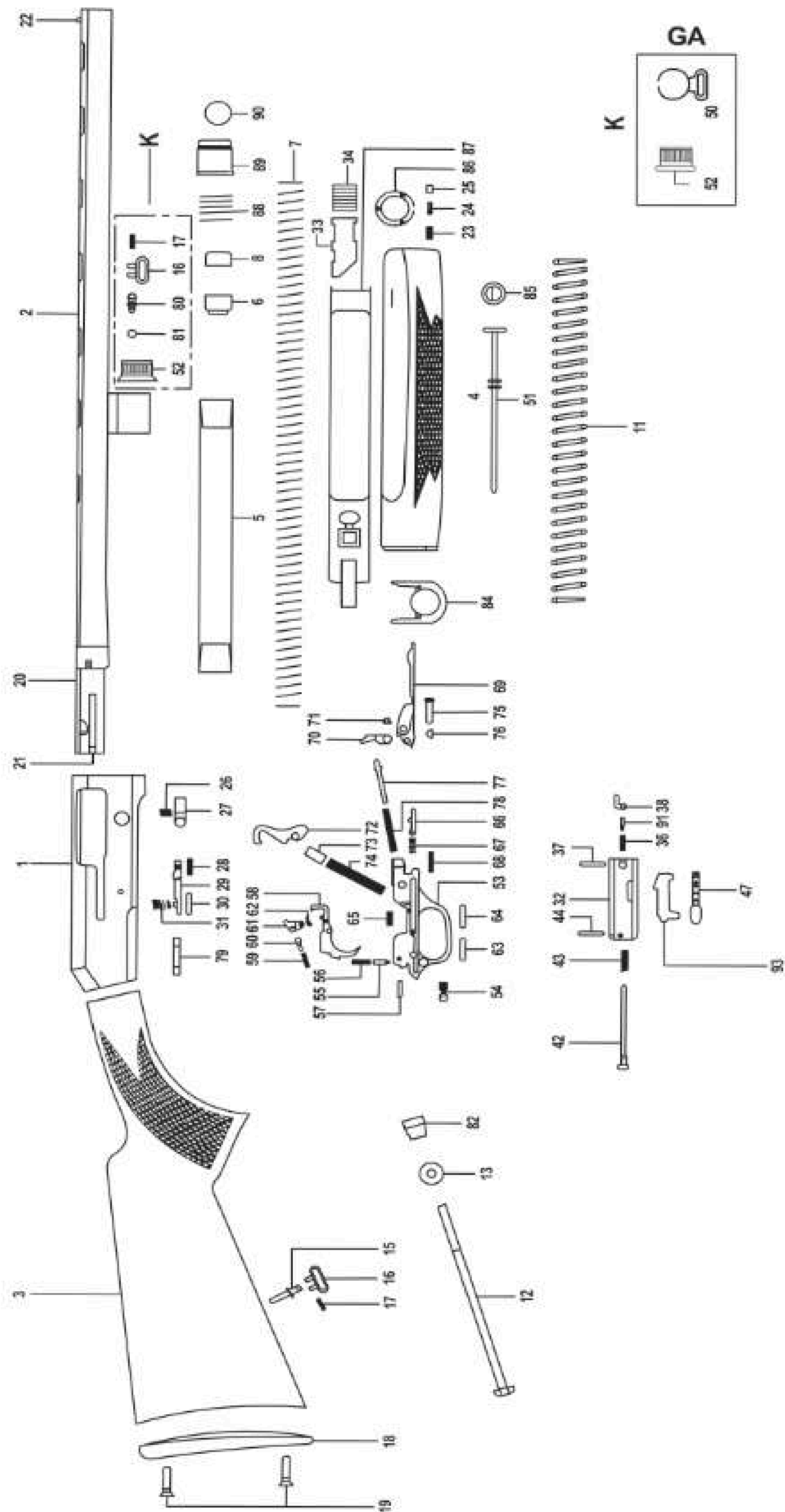


12



14

EXPLODED VIEW



PARTS LIST

PART NO	DESCRIPTION
1	RECEIVER
2	BARREL
3	STOCK
4	FOREARM
5	MAGAZINE TUBE
6	MAGAZINE FOLLOWER
7	MAGAZINE SPRING
8	MAGAZINE SPRING RETAINER
11	ACTION SPRING
12	STOCK BOLT
13	STOCK BOLT WASHER
15	STOCK SWIVER STUD
16	STOCK SWIVEL
17	STOCK SWIVEL PIN
18	BUTT PLATE
19	BUTT PLATE SCREW
20	BEARING BOLT
21	EJECTOR
22	FRONT BEAD
23	MAGAZINE CAP SPRING
24	MAGAZINE CAP PIN
25	MAGAZINE CAP SCREW
26	BOLT RELEASE SPRING
27	BOLT RELEASE
28	BOLT RELEASE PIN
29	BOLT RELEASE LATCH
30	BOLT RELEASE LATCH PIN
31	BOLT RELEASE LATCH SPRING
32	BREECH BOLT
33	ARM PIPE
34	CONNECTION RUBBER
36	EXTRACTOR SPRING BOLT
37	EXTRACTOR RETAINIG PIN
38	EXTRACTOR
42	FIRING PIN
43	FIRING PIN SPRING
44	FIRING PIN RETAINER
47	OPERATING HANDLE
50	FRONT SWIVEL
51	MAGAZINE PLUG

PARTS LIST

PART NO	DESCRIPTION
52	MAGAZINE CAP
53	GUARD
54	SAFETY
55	SAFETY PLUNGER
56	SAFETY SPRING
57	SAFETY PLUNGER
58	TRIGGER
59	SEAR SPRING
60	SEAR PLUNGER
61	SEAR
62	SEAR PIN
63	TRIGGER PIN
64	TRIGGER PIN
65	TRIGGER SPRING
66	CARRIER PLUNGER
67	CARRIER SPRING
68	CARRIER RETAINING PIN
69	CARRIER
70	CARRIER LATCH
71	CARRIER LATCH PIN
72	HAMMER
73	HAMMER PLUNGER
74	HAMMER SPRING
75	TRIGGER ASSEMBLY PIN SLEEVE
76	TRIGGER ASSEMBLY PIN RETAINER
77	CARRIER LATCH PLUNGER
78	CARRIER LATCH SPRING
79	TRIGGER GUARD
80	SWIVEL STUD
81	SWIVEL STUD RETAINER
82	STOCK BOLT RECEIVER
84	PLATE
85	MAGAZINE PLUG RETAINER
86	MAGAZINE CAP SUPPORT
87	ACTION BAR
88	GAS PISTON SPRING
89	GAS PISTON
90	RUBBER GAS RING
91	EXTRACTOR SPRING
93	LOCKING BLOCK

CLEANING & MAINTENANCE

WARNING: Make sure the firearm is unloaded.

1. Make sure the broad, polished finely fitting mating surface of a the breech block and receiver is especially clean and lightly oiled with high quality gun oil. Do not use silicone, lanolin or WD-40.

2. Run an oil patch through the bore with a cleaning rod starting from the breech end. To prevent leading, use a cleaning solvent and brass brush to clean the bore periodically. Follow this cleaning with one or two clean oil patches.

IMPORTANT: If your gun is equipped with choke tubes, do not use a brass brush to clean the barrels without having a choke tube installed.

Barrels that utilize choke tubes must also have the choke tubes removed to clean and oil the threads inside the barrel and the choke tubes themselves. This will protect the threads and prevent dirt build up that can cause tubes to become difficult to remove.

Never fire your gun without choke tubes completely tighten in barrels. Do not over tighten choke tubes. Wipe all exposed metal surfaces with an oiled cloth before storing. Do not squirt or pour oil into the mechanism because it may hamper proper functioning and will soak into the wood.

After extended periods of heavy use, your gun should be taken to a qualified gunsmith to have the action disassembled for professional cleaning and lubrication.

3. Care for your wood stock and forearm the same way you would a piece of furniture with the same finish.

STORAGE

- 1. Clean thoroughly and oil your firearm before storage.**
- 2. Store the firearm in a case to prevent scratches and dents.**
- 3. Store your firearm in a dry place to prevent corrosion.**
- 4. Store the firearm away from children and in a place where it cannot be obtained by those unauthorized to use it.**
- 5. Always store firearm unloaded and separately from and ammunition.**



**INTERNATIONAL
FIREARMS FACTORY**

International Firearms Factory

**Üzümlü Mh. 44829.Sk. No:5/A Beyşehir - Konya /
TURKEY**

WEB : <https://internationalfirearmsfactory.com/>

E-MAIL : export@internationalfirearmsfactory.com