



**LEVER ACTION
SHOTGUN
USER MANUAL**

READ THE INSTRUCTIONS AND WARNINGS IN
THIS MANUAL CAREFULLY BEFORE USING THIS
FIREARMS

THANK YOU FOR CHOOSING A “INTERNATIONAL FIREARMS FACTORY” PRODUCT

WARNINGS

Read very carefully this instruction manual before handing this shotgun.

The manufacturer is not responsible for damage to objects caused by misuse of the firearm or for injuries to persons or animals, or in case of death, caused voluntarily or involuntarily by the firearm user.

The manufacturer is not responsible for injuries caused by poor maintenance, misuse of the firearm, unauthorized or improper modifications.

The manufacturer declines responsibility for the indirect consequences of any injuries and/or death of persons or animals, damage to objects caused by use of the firearm or by primer explosion, by bullet's ricochet, or unsafe loading practices and/or procedure.

Read the entire manual and learn the proper use of the firearm without live ammunition.

It is important that you understand the proper use of this product. The life of the people close to you may depend on your safe behavior.

If the manual is not clear, please contact the dealer where you bought the firearm or call the distributor or the manufacturer by using the contact information provided within this manual.

The manufacturer declines any responsibility for misuse of the firearm. In case of alteration of the firearm, The manufacturer declines any civil and penal responsibility and will not refund any damage.

Quality Inspection: Every firearm is thoroughly inspected by the manufacturer, for function and cosmetic blemish, prior to shipment.

SAFETY RULES

- **Read the instructions carefully before use. Reading the manual and careful examination of the firearm are fundamental to avoid any kind of problem.**
- **Be aware that you are handling a firearm; therefore your knowledge and behavior may affect your life and those of the people close to you.**
- **Firearms and ammunitions must be kept in separate places.**
- **Always keep firearm and ammunitions out of reach of children.**
- **Store the firearm in a clean, dry and airy place after use to avoid rust in mechanical parts that may cause serious problems in functioning after a period of inactivity.**
- **The firearm must always be stored unloaded, always check that the chamber is empty.**
- **Keep away from open flames or heating sources. Never leave a loaded firearm unattended. Never leave the firearm loaded, it could fall and cause injury and death. Always point the firearm in a safe direction, and handle it as though it were loaded. This is especially important when loading and unloading the firearm and when handing it to someone else. Never take someone's word that it is unloaded. Always make sure the firearm is unloaded before laying it down or handing it to someone else.**
- **After use, clean and lubricate the inside of the barrel with appropriate oil. Grease or oil build up can cause excessive pressure and result in serious personal injuries. Before using the firearm again, inspect the barrel and chamber to make certain that there are no obstructions in the bore. Remove any oil residue with rod and dry patch before shooting.**

SAFETY RULES

- **Never rest your finger on the trigger until the very moment you wish to shoot. Always keep the safety on until you are ready to safely shoot at an intended target. Note: Safety devices on firearms are extras and are not a substitute for your proper and safe handling practices.**
- **Always keep the firearm unloaded when transporting it from home to the shooting areas. Carefully check that cartridge chamber is empty.**
- **When you walk around with the firearm in a shooting area, always keep the muzzle pointed in a safe direction.**
- **Never run with a loaded firearm, do not cross any obstacle (fences or water courses, etc.) or walk where there is any possibility of slipping or falling without having your firearm unloaded and in safety position.**
- **When selecting a place to shoot, always be absolutely sure of your target and the area behind it before you touch the trigger, making sure there is an adequate backstop which will stop and contain bullets. A bullet can travel through or past your target with a range up to 1.5 miles. If you have any doubt, do not shoot.**
- **Never shoot against a solid surface or in a pool of water, the projectiles could ricochet and shoot toward any direction. Do not shoot up into the sky.**
- **Keep all bystanders behind you, standing beside a shooter is not a safe position. Make sure all other shooters and bystanders are well away from the ejection port.**
- **Do not smoke while handling, loading or shooting any ammunition, especially black powder. Keep black powder in a closed container at all times, re-closing the container after each and every use. habits is the best way to prevent accidents.**

SAFETY RULES

- **Never drink alcoholic beverages or take any drugs before orduring shooting, as this not only constitutes criminal disregard for your safety and that of others, but will seriously impair your judgment and vision. Never use a firearm while you are taking medication unless you have checked with your doctor to ensure you are fit to handle the firearm safely.**
- **Always wear and encourage others near you to wear proper ear protection when shooting, especially on a range since the noise from your firearm and other firearms close to you, could result in permanent hearing loss.**
- **Always wear protective shooting glasses to protect your eyes from injury by gun powder, gas, lubricant, dirt or metallic particles, carbon residue, sparks or other debris.**
- **Wash hands thoroughly after shooting and handling firearms to remove any unwanted residues.**
- **Never leave the loaded firearm or the loaded magazine in the sun.**
- **By replica firearms there is no modern safety. In this case you must pay even more attention to safety rules.**

REMEMBER : No mechanical safety device is infallible. The user is responsible for injuries or damages caused to him or to other persons. Complete knowledge of your firearm can make the difference.

IDENTIFYING MARKINGS

Every firearm produced in our factory has a serial number that is marked on the receiver/frame . In addition to the serial number you will also find the manufacturers information with the model name and caliber marked either on the frame or the barrel as required by law.

WARNING : These markings must not be removed from the firearm for any reason.

DESCRIPTION & SPECS

Your shotgun is gas operated. The gas created from firing a live shot shell operates the action. Once the first shell has been fired, the next shell in the magazine will automatically cycle into the chamber, and this cycle will continue (each time the trigger is pulled) until all shells loaded in the magazine have been fired. The bolt will remain locked in the open position after the last shell is fired.

DISASSEMBLY



1 - Safety ; Red is ready to fire & white is safe mode.



2 - Remove the forend cap by turn it to anticlockwise.



3 - Remove forend & barrel assembly together by pulling forward.



4 - Take down the receiver pins by pressing with external screw.

DISASSEMBLY



5 - Over view of pins from downward.



6 - Take out the trigger assembly by pushing it outside.

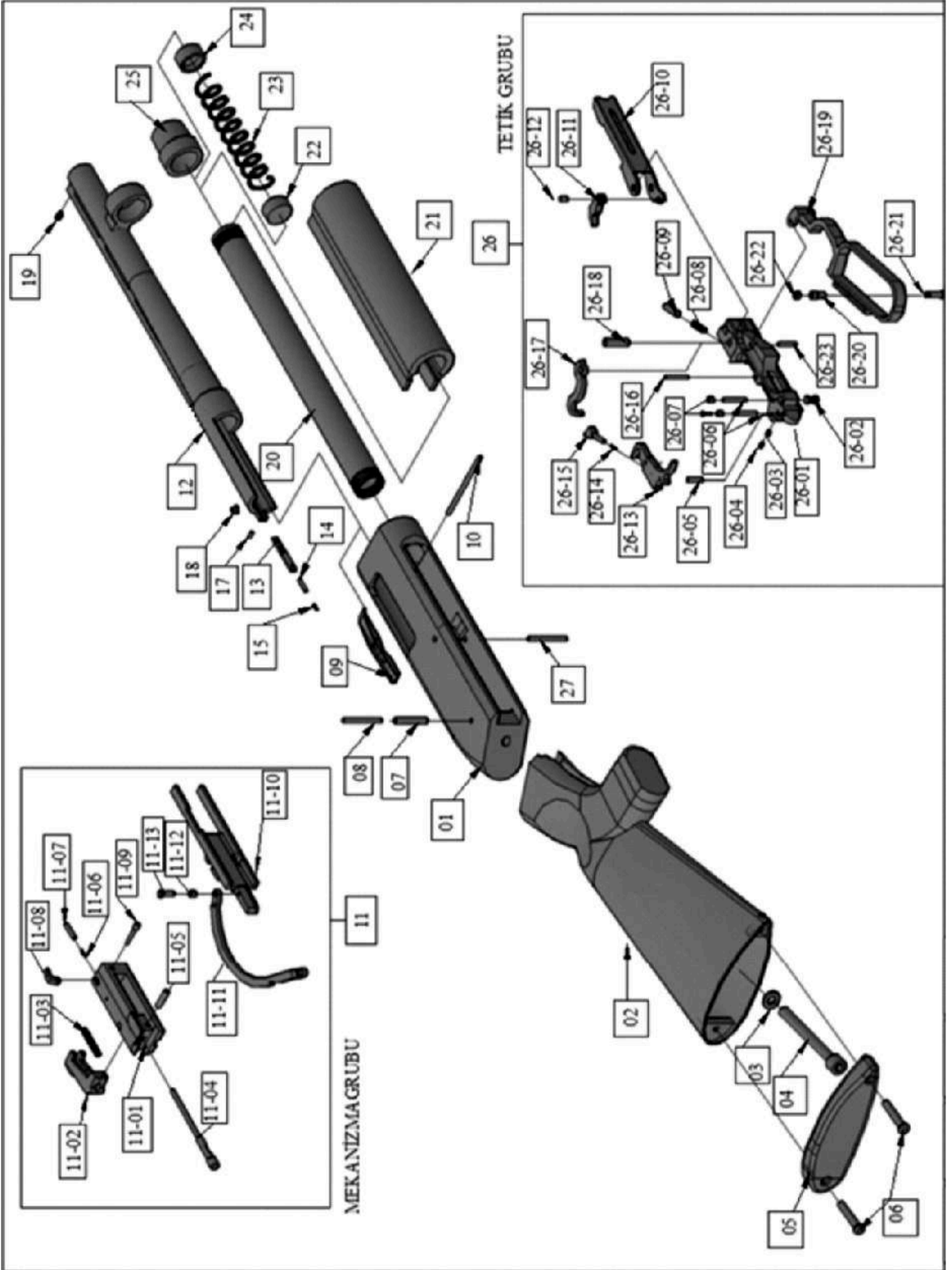


7 - First remove the screw of rubber pad and than take out the screw of stock/butt.



8 - Same way as explained previously to take off the grip remove the nut

EXPLODED VIEW



PART LIST

01	Receiver	19	Brass Bead
02	Stock	20	Magazine Tube
03	Stock Connection Bolt Washer	21	Forend
04	Stock Connection Bolt	22	Magazine Follower
05	Synthetic Stock Pad	23	Magazine Spring
06	Stock Pad Screws	24	Magazine End
07	Ayceki (Lever Arm) Stopper Reel	25	Barrel Connection Nut Complete
08	Ayceki (Lever Arm) Stopper Pin	26	Trigger
09	Magazine Stop Complete	26-01	Trigger Body
10	Magazine Stop Connection Pin	26-02	Safety
11	Bolt	26-03	Safety Push Reel
11-01	Bolt Body	26-04	Safety Push Spring
11-02	Locking Lug	26-05	Safety Push Connection Pin
11-03	Firing Pin Spring	26-06	Ayceki (Lever Arm) Stop Connection Pins
11-04	Firing Pin	26-07	Ayceki (Lever Arm) Stop Reels
11-05	Firing Pin Connection Pin	26-08	Operating Handle Spring
11-06	Extractor Spring	26-09	Operating Handle Reel
11-07	Extractor Pin	26-10	Carrier
11-08	Extractor	26-11	Carrier Hand
11-09	Extractor Connection Pin	26-12	Carrier Connection Pin
11-10	Bolt Carrier	26-13	Trigger
11-11	Ayceki (Lever Arm)	26-14	Hammer Sear Spring
11-12	Ayceki (Lever Arm) Connection Nut	26-15	Hammer Sear
11-13	Ayceki (Lever Arm) Connection Bolt	26-16	Hammer Sear Connection Pin
12	Barrel	26-17	Hammer
13	Ejector	26-18	Hammer Connection Reel
14	Ejector Pin	26-19	Operating Hand Lever
15	Ejector Pin Spring	26-20	Ayceki (Lever Arm) Connection Pin
17	Ejector Screw Front	26-21	Ayceki (Lever Arm) Handle Reel Screw
18	Ejector Screw Back	26-22	Ayceki (Lever Arm) Handle Reel
		26-23	Ayceki (Lever Arm) Connection Screw
		27	Trigger Guard Dissassembly Pin

CLEANING & MAINTENANCE

WARNING: Make sure the firearm is unloaded.

1. Make sure the broad, polished finely fitting mating surface of a the breech block and receiver is especially clean and lightly oiled with high quality gun oil. Do not use silicone, lanolin or WD-40.

2. Run an oil patch through the bore with a cleaning rod starting from the breech end. To prevent leading, use a cleaning solvent and brass brush to clean the bore periodically. Follow this cleaning with one or two clean oil patches.

IMPORTANT: If your gun is equipped with choke tubes, do not use a brass brush to clean the barrels without having a choke tube installed.

Barrels that utilize choke tubes must also have the choke tubes removed to clean and oil the threads inside the barrel and the choke tubes themselves. This will protect the threads and prevent dirt build up that can cause tubes to become difficult to remove.

Never fire your gun without choke tubes completely tighten in barrels. Do not over tighten choke tubes. Wipe all exposed metal surfaces with an oiled cloth before storing. Do not squirt or pour oil into the mechanism because it may hamper proper functioning and will soak into the wood.

After extended periods of heavy use, your gun should be taken to a qualified gunsmith to have the action disassembled for professional cleaning and lubrication.

3. Care for your wood stock and forearm the same way you would a piece of furniture with the same finish.

STORAGE

- 1. Clean thoroughly and oil your firearm before storage.**
- 2. Store the firearm in a case to prevent scratches and dents.**
- 3. Store your firearm in a dry place to prevent corrosion.**
- 4. Store the firearm away from children and in a place where it cannot be obtained by those unauthorized to use it.**
- 5. Always store firearm unloaded and separately from and ammunition.**



INTERNATIONAL
FIREARMS FACTORY

International Firearms Factory

**Üzümlü Mh. 44829.Sk. No:5/A Beyşehir - Konya /
TURKEY**

WEB : <https://internationalfirearmsfactory.com/>

E-MAIL : export@internationalfirearmsfactory.com